

Year 2 Grade Newsletter – Term 1 2025

Welcome to Term 1 of Year 2. Our Year 2 classes for 2025 are: 2C – Mrs Carmichael (Miss Carol – Fri), 2G – Mrs Gaynes, 2M – Mrs Munns, 2T – Mrs Mui, and 2W – Mrs Walker. Mrs Carmichael is the Assistant Principal supervising Year 2. We have an exciting term ahead! Please ensure that you have access to the School Bytes Parent app for our weekly school newsletters and parent notifications. Additionally, please ensure you have parent access to Seesaw. Below is an overview of the learning taking place this term.

Important Dates

Thursday 6 February	-	First day of Term 1
Tuesday 25 February	-	Meet the Teacher (Stage 1)
Wednesday 26 February	-	Scripture commences
Monday 7 April at 9.30am	-	ANZAC Day assembly (parents are welcome)
Friday 11 April	-	Last day of Term 1
Wednesday 30 April	-	First day of Term 2 (students)

English

Students will engage in a variety of English lessons during each week. They will focus on developing their foundational literacy skills and their understanding of the subject, English. See below for specific teaching and learning programs related to English that will take place in Year 2 this term.

InitialLit2

Students will participate in daily lessons from the InitialLit-2 program. InitialLit-2 is designed to build on the skills taught in Year 1 and Kindergarten. During lessons, students will build on their phonological awareness and spelling skills, as well as their reading comprehension, fluency, spelling, grammar and vocabulary.



Reading

Students will be explicitly taught various comprehension strategies during weekly modelled reading lessons. Some of these strategies include predicting, making connections, visualising and retelling. Within guided reading sessions, teachers will support students to apply these strategies to comprehend a range of fiction and non-fiction texts at their individual reading levels. Also, students will work on developing their fluency and vocabulary knowledge during guided reading.

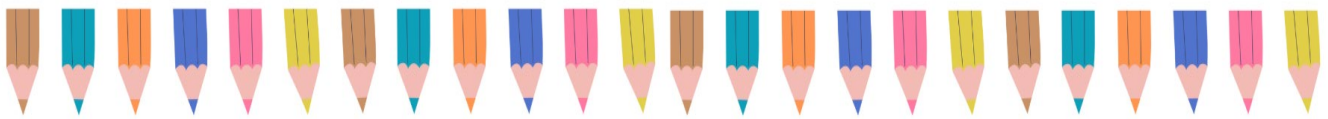
English Units

Students will participate in various English units. During these units, they will be exposed to a wide range of quality texts, and they will also focus on developing their oral language skills, vocabulary, reading comprehension and writing skills. This term in English units, students will focus on composing explanations, narratives and information reports.

Handwriting

Students will participate in regular handwriting lessons. They will practise forming letters with consistent size and slope in NSW Foundation Style. Students will work on positioning all letters correctly on the line with appropriate spacing between words.





Mathematics

Students will develop their ability to work mathematically by reasoning, problem solving and communicating across the strands Number and Algebra, Measurement and Space, and Statistics and Probability. Mathematics content will be connected across these strands to enable students to develop a deep understanding of the following concepts.

Number and Algebra

- Use counting sequences of ones with two-digit numbers and beyond.
- Continue and create number patterns and represent numbers on a line.
- Represent groups of ten and use counting sequences of ones and tens
- Form, regroup and rename three-digit numbers.
- Use count-by-one strategies to solve addition and subtraction problems.
- Recognise and recall number bonds up to ten.



Measurement and Space

- Recognise, represent, classify, combine and separate two-dimensional shapes.
- Compare and order lengths, using appropriate uniform informal units.
- Indirectly compare area and measure areas using uniform informal units
- Compare rectangular areas using square units.
- Measure and compare volumes and capacities by filling and packing containers.
- Investigate mass using an equal-arm balance.

Statistics and Probability

- Ask questions, gather data and represent data with objects and drawings.
- Identify a question of interest and create displays of data.

Geography

This semester, Stage 1 students will explore places across a range of scales within Australia, including places that exist on a personal, local and national level. In addition, students will investigate Australia's location in the world. They will describe connections people, including Aboriginal and Torres Strait Islander Peoples, have with places, both locally and globally and identify factors affecting people's accessibility to places.

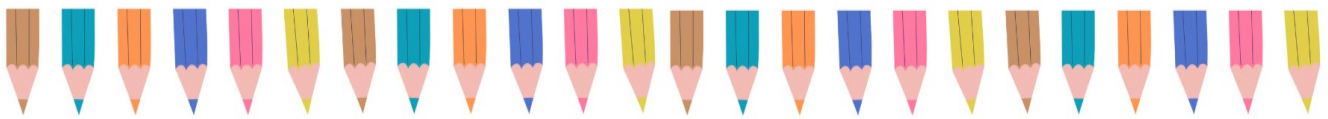


Creative Arts

Stage 1 students will participate in visual arts, music and drama lessons this term. They will create a self-portrait inspired by folk artist Heather Galler, using thick and thin outlining and oil pastels. Within music lessons, students will learn about the features of music including pitch, dynamics, tempo, structure and tone colour. Students will listen to and discuss the meaning of a range of music and create a short song to accompany a story scene. Within drama lessons, students will explore the use of facial expressions and movement. They will work in groups to take on a character when performing a scene for their class.

Personal Development and Health (PDH)

Students will be learning about passenger and pedestrian safety, including walking/riding on the footpath and identifying safe places to cross the road. They will explore their rights as a child and describe how they have developed greater independence as they have grown older. In addition, students will discuss and describe changes in their physical appearance now compared to when they were younger.



Child Protection

Students will engage in some child protection lessons in Term 1. In these lessons, students will explore what it means to be respectful of others such as taking turns, sharing, communicating, and responding appropriately. They will name different groups they belong to and what they like about each group, sharing ideas on how others might feel when excluded or included in groups.

Grade Sport

Students will participate in weekly grade sport lessons to develop fundamental movement skills, such as kicking, balancing, jumping, over-arm throwing, catching and striking. Activities in PE lessons are also aimed to promote cooperation, perseverance and teamwork. **Students must come to school dressed in their sport uniform each Wednesday for grade sport.**



Science – with Mrs Pather and Mrs Lee

This term in science, Stage 1 students will be exploring the unit called ‘Material World’, that focuses on how materials can be changed, manipulated and combined. They will test changes that occur to a material’s properties when it is heated and cooled or combined with other materials. Students will have the opportunity to explore the properties of materials and demonstrate the suitability of materials and their uses. To conclude, students will apply their knowledge developed throughout the unit to design, make, test and evaluate a shelter using different materials.

Specialist PE - with Mrs Plant and Mr Teylan

In addition to grade sport, students will be participating in Stage 1 Physical Education lessons in Term 1. They will be engaging in activities which will continue to develop and refine students’ fundamental movement skills. The skills will include underarm throwing, two-handed strike, hopping, skipping, and catching. The lessons will incorporate a warm-up activity, skill development and a modified game. To be organised and ready students should wear the correct sports uniform, including sport shoes, a hat and a drink bottle. See below for your child’s PE lesson day:

Tuesday	Friday
2C & 2W	2G, 2M & 2T

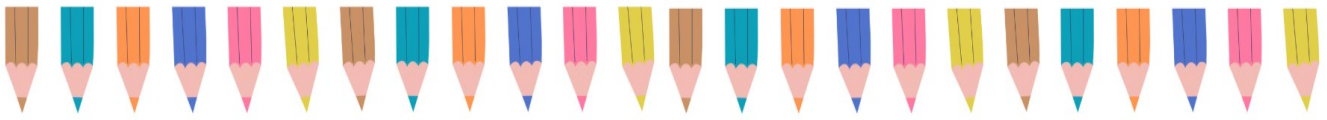
Homework

Homework this term includes home reading, reading comprehension activities, spelling revision and Mathletics. Homework booklets will be first sent home on Monday of Week 4 and will be due on Friday of Week 6. An explanation of homework expectations will be in your child’s homework book. Mathletics log in details for your child will be glued in the front of their homework books in the coming weeks.

Library

Each week, students can borrow books from the school library. They must have a library bag to borrow and return books. If your child does not have a library bag, you can purchase one for \$2.00 from the library. See below for your child’s library borrowing day:

Tuesday	Wednesday	Friday
2G	2C	2M, 2T & 2W



Absences

Absences from school require a note explaining the absence. Absences **must be explained within seven (7) days**. You can submit an absence notification via School Bytes or email castlehill-p.school@det.nsw.edu.au.

Alternatively, a note can accompany your child upon their return to school. All medical certificates should be emailed directly to the school rather than the class teacher. Please advise the front office if your child will be taking an extended absence as this may require the completion of an exemption form. If students arrive at school late or depart early, they must be accompanied by a parent/guardian and must be signed in/out at the front office first.

If at any time you have questions or concerns about your child's learning or welfare, please feel free to make an appointment with the class teacher. We are looking forward to an exciting term of learning with you and your child.

Kind Regards,
Year 2 Teachers