



Castle Hill Public School

NEWSLETTER

Les Shore Place, Castle Hill NSW 2154 Phone: 9634 3777 Fax: 9899 6845
Email: castlehill-p.school@det.nsw.edu.au Webpage: castlehill-p.schools.nsw.gov.au

Term 2 Week 8 – June 18, 2025

WHAT'S ON

Tuesday June 24

3-6 Athletics Carnival

Friday July 4

Last day of term

PBL Fortnightly Expectation Focus



RESPONSIBLE

Care for your school environment.

Principal's Report

School Building Program – now complete!

The final phase of the building program is now complete, and our school playground was returned to us on Monday morning! The space adjacent to the new court has new turf laid and will be cordoned off until the start of Term 3.

Our students have made full use of the additional play spaces, and it is lovely to see so many happy students running around, playing games and enjoying the extra room that they now have.

Open Day / Grandparents Day

A date for your diary...our Open Day / Grandparents Day will return bigger and better than ever on the morning of Wednesday 6 August, during Public Education Week.

On this day, we will invite parents and grandparents to visit classrooms and enjoy some student performances. The 'Castle Hill Café' will also return this year!

More information regarding exact timings will be provided as the day approaches.

Band Performances

Congratulations to each of our students who performed in the Senior or Intermediate Band last weekend and represented our school so well! Mrs Kohary has included details of our achievements in her report.



Semester 1 Parent/Teacher interviews (including EALD and learning support)

Parents will be able to book an interview time via their School Bytes portal this afternoon from 3.30pm. Interview bookings will close on Friday 27 June at 5.00pm. Interviews will be held during the week commencing Monday 30 June.

Information regarding interviews was sent to you last Wednesday via your School Bytes portal. In addition, students who attend EALD withdrawal support classes and/ or learning support classes received a note showing you which teacher to select if you would like to make an appointment time with an EALD or learning support teacher. We strongly encourage parents to do this if your child participates in these support programs.

Please note that while interview bookings are spaced 15 minutes apart, the actual interview time is 10 minutes. Please be mindful of this when speaking with teachers as we do not wish to keep other parents waiting beyond their own appointment times.

Parents who book a morning interview time are asked not to park in the school car park. Car park spaces after 8.00am are reserved for teacher use. Of an afternoon, parents can park in the staff car park if there is a vacant parking spot. Please do not park on the road against the fence line.

Semester 1 reports will be issued on Friday 27 June via your School Bytes portal.

Kindergarten Enrolment for 2026

Applications to enrol for Kindergarten at Castle Hill Public School in 2026 are now open. If you, or someone that you know, is looking to enrol a child into Kindergarten next year, enrolment forms can be lodged online by following a link on our school website at <http://www.castlehill-p.schools.nsw.edu.au/our-school/enrolment>

The online enrolment portal also accepts out-of-area applications. Now that our new school buildings are complete, our student enrolment is now considered to be under the 'enrolment cap'.

In circumstances within a family where older children are currently enrolled here at Castle Hill Public School, but your residential address is now outside our catchment area, an out-of-area application will be required. These applications will be prioritised so that all siblings of the same family can be enrolled at Castle Hill Public School.

Please note that as part of the application process, proof of residential address is required. In cases where a lease agreement that expires before February 2026 is offered as proof of address, we will ask for details of a new lease agreement to be provided before enrolment will be confirmed.

Dates for our 2026 Kindergarten Orientation program will be confirmed in due course.

Craig Oliver-Principal
Craig.oliver@det.nsw.edu.au

News from the Deputies

School Assemblies

Assemblies occur each Monday at 2.00pm, parents are welcome to attend. Our Assemblies for Term 2 are as follows:

Monday 23 June	Stage 3 (Years 5 and 6)
Tuesday 1 July	Term 2 Platinum Assembly for Yr 3 & Yr 6 students
Thursday 3 July	Term 2 Platinum Assembly for Yr 4 and Yr 5 students

Band News

Our school's Senior and Intermediate Bands performed at the Hills Band Festival held over the weekend. This was an opportunity for our bands to be adjudicated against specific criteria and to also showcase to family and friends their musical capabilities. Bands were also judged on their range of repertoire and ability to play cohesively. On Friday, the Senior Band received a Gold Performance award and on Sunday afternoon, the Intermediate Band also received a Gold Performance award and the Adjudicator's Choice award.





Islamic Scripture (SRE) Teacher needed

Our Stage 2 (Years 3 and 4) children in the Islamic SRE group are still without a teacher. If you can assist or know of someone who might be able to, please email Mrs Kohary alexandra.cook@det.nsw.edu.au. Full training and resources are provided to volunteer teachers.

Interpreters for parent-teacher interviews

Appointments have been pre-booked for parents requesting an interpreter to support them during our upcoming parent-teacher interviews. Please check emails and your School Bytes parent app to confirm your time. Interpreters will only be available on Wednesday 2 July.

NSW Public Schools Student Survey

In Term 2, we are offering our students the opportunity to participate in the NSW Public Schools Student Survey. The survey gives students the chance to share their thoughts and feelings about life at school, including questions about their engagement, learning experiences and wellbeing at school.

Hearing directly from our students will help us understand what's working well and where improvements can be made to our school. The survey is confidential, takes around 10 to 15 minutes to complete, and will be conducted online during school hours. Our students in Years 3 to Year 6, will complete the survey in Weeks 8 and 9 of this term.

Participation is voluntary. If you prefer your child not to participate, please complete the opt-out consent form, which can be found at the front office, and return it to the school. Further information about the survey is available at <https://education.nsw.gov.au/npss>.

Nationally Consistent Collection of Data

The Nationally Consistent Collection of Data on school students with disability is an annual collection that counts the number of school students with disability and the level of reasonable educational adjustments they are provided with. The national data collection will count students who have been identified as receiving an adjustment to address a disability under the Disability Discrimination Act 1992 (DDA). The DDA can be accessed from the ComLaw website at www.comlaw.gov.au

Our school will collate this data early this term. Please take the time to read further information about this data collection on the following page. If you have any questions regarding this data collection, please see Miss Machuca.

Playground – Court

Our students have been very excited about the opening of our new court and it has already been very popular each day this week.

Students are reminded to ensure the following:

- They are wearing a hat
- They have eaten their food (as no food is permitted on the courts)
- They only use a netball or basketball when on the court

Winter Uniform

All students should be wearing winter uniform to school. This includes [long-sleeved shirts](#) and the [school tie](#). Please ensure your child is wearing the correct school uniform, including navy stockings/white socks or trousers for girls (not black leggings) and grey socks for boys. There are many hats, jumpers and jackets that get misplaced, so please ensure these have your child's name and class on them so items can be returned.



Mrs Alex Kohary and Miss Danielle Machuca
Deputy Principals

FACT SHEET FOR PARENTS, GUARDIANS AND CARERS

WHAT IS THE NCCD?

The Nationally Consistent Collection of Data on School Students with Disability (NCCD) takes place every year.

The NCCD is a collection that counts:

- the number of school students receiving an adjustment or 'help' due to disability
- the level of adjustment they are receiving to access education on the same basis as other students.

Students are counted in the NCCD if they receive ongoing adjustments at school due to disability. This 'help' allows them to access education on the same basis as a child without disability. The NCCD uses the definition of disability in the [Disability Discrimination Act 1992](#).

Schools provide this information to education authorities.

Go to *What is a reasonable adjustment?* below to learn about adjustments.

WHY IS THIS DATA BEING COLLECTED?

All schools in Australia must collect information about students with disability.

The NCCD:

- ensures that the information collected is transparent, consistent and reliable
- provides better information that improves understanding of students with disability
- allows parents, guardians, carers, teachers, principals, education authorities and government to better support students with disability.

Student with disability loading

Funding from the Australian Government for students with disability is based on the NCCD through the student with disability loading.

Students with disability who are counted in the top three levels of the NCCD (extensive, substantial and supplementary) attract the loading. Funding is based on a per-student amount at each of the three levels of additional support. The amount of the loading reflects the level of support students with disability need to participate fully in school, with higher funding for those who need higher levels of support.

Australian Government recurrent school funding is provided as a lump sum to school authorities including state and territory governments, which can then distribute the funding to their member schools according to their own needs-based arrangements.

The Government expects schools and school systems to consider their funding from all sources (ie Australian Government, state and territory and private) and prioritise their spending to meet the educational needs of all of their students, including students with disability. This can include payment of professional learning for staff and building inclusive cultures in schools.

WHAT ARE THE BENEFITS OF THE NCCD FOR STUDENTS?

The information collected by the NCCD helps teachers, principals, education authorities and governments to better support students with disability at school.

The NCCD encourages schools to review their learning and support systems and processes. This helps schools to continually improve education outcomes for all students.

WHAT MUST SCHOOLS DO FOR STUDENTS WITH DISABILITY?

All students have the right to a quality learning experience at school.

Students with disability must be able to take part in education without discrimination and on the same basis as other students. To ensure this, schools must make reasonable adjustments if needed for students with disability. Educators, students, parents, guardians, carers and others (eg health professionals) must work together to ensure that students with disability can take part in education.

The *Disability Discrimination Act 1992* and the *Disability Standards for Education 2005* describe schools' responsibilities.

WHAT IS A REASONABLE ADJUSTMENT?

An adjustment is an action to help a student with disability take part in education on the same basis as other students.

Adjustments can be made across the whole school (eg ramps into school buildings). They can be in the classroom (eg adapting teaching methods). They can also be for individual student need (eg providing personal care support).

The school assesses the needs of each student with disability. The school provides adjustments in consultation with the student and/or their parents, guardians and carers.

Schools must make reasonable adjustments if needed. The Disability Standards for Education 2005 define 'reasonable adjustment' as an adjustment that balances the interests of all parties affected.

WHO IS INCLUDED IN THE NCCD?

The definition of disability for the NCCD is based on the broad definition under the *Disability Discrimination Act 1992*.

The following students are examples of those who may be included in the NCCD if they need monitoring and adjustments:

- students with learning difficulties (such as dyslexia)
- students with chronic health conditions (such as epilepsy or diabetes).

WHO COLLECTS INFORMATION FOR THE NCCD?

Schools identify which students will be counted in the NCCD. They base their decisions on the following:

- adjustments provided for the student (after consultation with the student and/or their parents, guardians and carers)
- the school team's observations and professional judgements
- any medical or other professional diagnoses
- other relevant information.

School principals must ensure that information for the NCCD is accurate.

WHAT INFORMATION IS COLLECTED?

A student is counted in the NCCD if they receive reasonable adjustments at school due to disability.

Each year, schools collect the following information about the student, including:

- their year of schooling
- the level of adjustment received
- the broad type of disability.

For students who have more than one disability, the school uses professional judgement to choose one category of disability. They choose the category that most affects the student's access to education and for which adjustments are being provided.

A high level summary of the NCCD data is available to all Australian state and territory governments to improve policies and programs for students with disability.

HOW IS THIS DATA USED?

The NCCD data informs funding and work by schools and sectors. It ensures that support for students with disability becomes routine in the day-to-day practice of schools. The NCCD also supports students in the following ways.

- The NCCD helps schools better understand their legislative obligations and the Disability Standards for Education 2005.
- Schools focus on the individual adjustments that support students with disability. This encourages them to reflect on students' needs and to better support students.
- The NCCD facilitates a collaborative and coordinated approach to supporting students with disability. It also encourages improvements in school documentation.
- The NCCD improves communication about students' needs between schools, parents, guardians, carers and the community.

The Australian Curriculum, Assessment and Reporting Authority (ACARA) annually publishes high-level, non-identifying NCCD data.

WHEN DOES THE NCCD TAKE PLACE?

The NCCD takes place in August each year.

IS THE NCCD COMPULSORY?

Yes. All schools must collect and submit information each year for the NCCD. This is detailed in the *Australian Education Regulation 2013*. For more information, ask your school principal or the relevant education authority.

HOW IS STUDENTS' PRIVACY PROTECTED?

Protecting the privacy and confidentiality of all students is an essential part of the NCCD.

Data is collected within each school. Personal details, such as student names or student identifiers, are not provided to federal education authorities. Learn more about privacy in the [Public information notice](#).

FURTHER INFORMATION

Contact your school if you have questions about the NCCD. You can also visit the [NCCD Portal](#).

There is also a free [e-learning resource](#) about the *Disability Discrimination Act 1992* and Disability Standards for Education 2005.

This document must be attributed as *Fact sheet for parents, guardians and carers*.



Athletics Carnival-House Captains

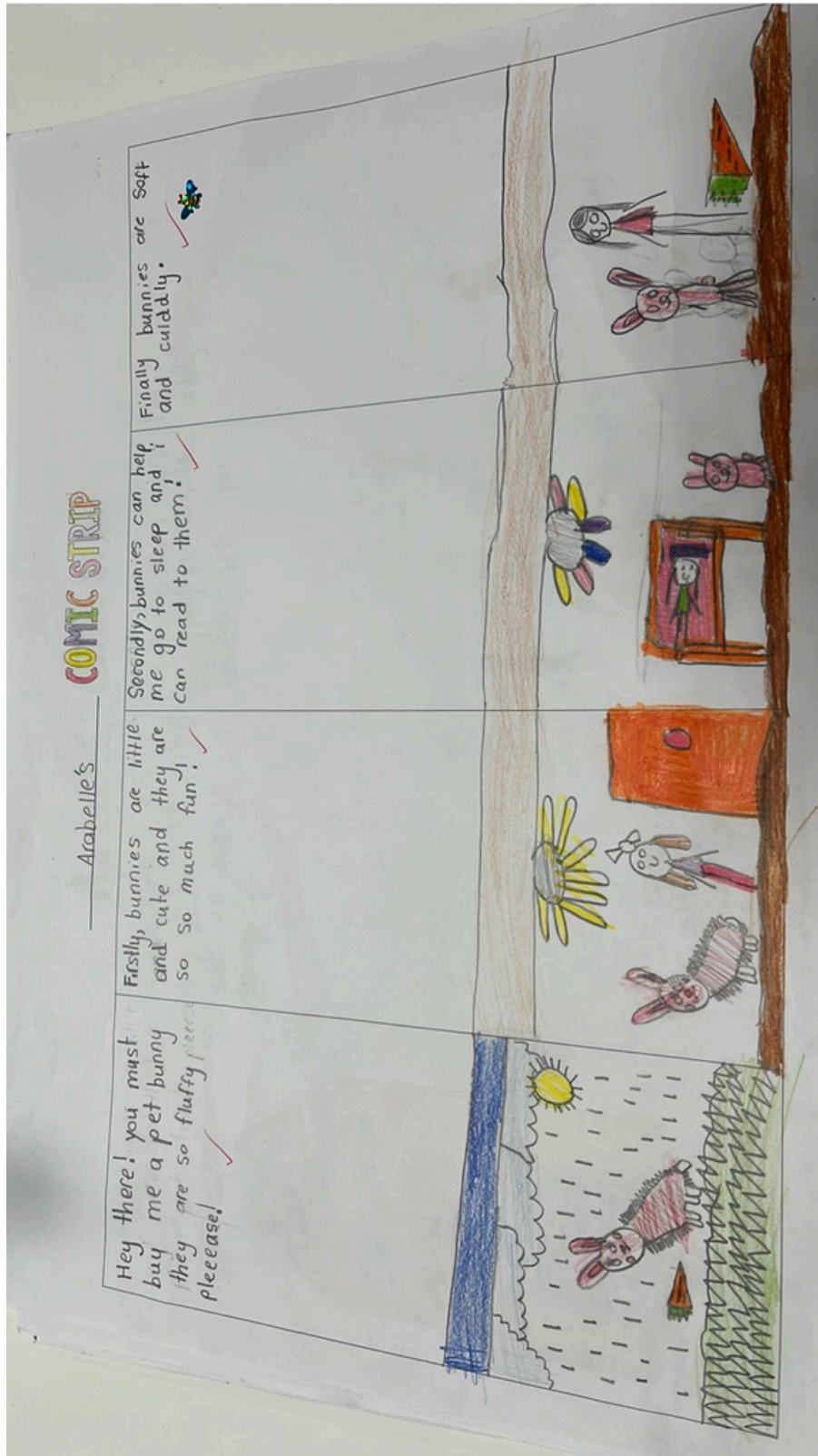
House Captains Charlotte, Kobi, Chloe, Atharva, Jason, Dhyanan, Virat and Emma proudly led the house meetings in preparation for our Athletics Carnival on Tuesday June 24, Week 9, well done house captains!

A cartoon illustration of a parrot with a blue head, red body, and yellow wings. It has a large orange beak and yellow feet. The parrot is standing and facing left.



Leon - 1A

Pabalo's Pick



Arabelle - 1T

Pabalo's Pick



COMIC STRIP

Elisa Chen

Hey! I really want a bird!! You must buy me one today.



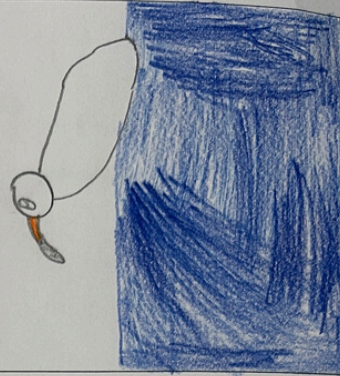
Firstly, my pet bird can pick berries off trees if we can't climb.



Secondly, if our pet bird was a woodpecker, it can peck wood for us.



Finally, if our pet bird was a duck, it can bring us fish.



Elisa - 1G

Pabalo's Pick



Excursion Recount 12.6.25
On Friday I went on an excursion
in the morning. First we had fruit
break. Next we went on a short
bushwalk. Then we used interesting
magnifier glass. After that we went
on a long, rocky, steep bushwalk.
Then we did some relays. Finally we
threw hunting boomerangs. At last we
made shelters.



Cherisha - 1J

Positive Behaviour Learning Awards



YEARS 5 & 6 THESE AWARDS WILL BE PRESENTED TO THE STUDENTS MONDAY WEEK 9 DURING ASSEMBLY AT 2.00PM PARENTS ARE WELCOME TO ATTEND.

SILVER AWARDS

YEAR 5		YEAR 6	
Hazel	5C	Emma	5/6B
Beau	5C	Avni	6A
Stefano	5C	Dhyana	6A
Selina	5C	Angela	6A
Felix	5C	Lila	6C
Lana	5C	Ivy	6D
Aarna	5C	Arnav	6G
Celia	5C	Mohammad	6L
Trijal	5C	Araina	6L
Ridhima	5C		
Vibha	5F		
Maira	5K		
Mahi	5K		
Shaina	5K		

GOLD AWARDS

YEAR 5		YEAR 6	
Esra	5K	Kate	6A
Jamie	5L	Melody	6G
Myra	5S	Layla	6R
Sair	5S		

PSSA and Sport News

PSSA

A reminder for students to wear their jersey, bring any required equipment, bring their water bottle and wear a hat. Students will leave the school grounds at 11.00am and will return to school at approximately 1.00pm.



AFL	Caddies Creek Reserve, Millcroft Way, Kellyville
Netball	Kellyville Netball Courts, 1 Wellgate Ave, Kellyville
Soccer	Eric Mobbs, Excelsior Ave, Castle Hill
Newcombe Ball	Bella Vista Public School, Bella Vista

TRAINING



A reminder that training will be on Friday at 8.30am this week for all winter teams, except AFL which will now be Wednesday mornings at 8.30am for the rest of this term, thank you.

Miss Rebecca Lambe

Relieving Assistant Principal | PSSA Coordinator

P&C News

President Message

Dear Parents and Carers,

We are so close to the end of the school build now. The P&C is still interested in your thoughts on what parents would like to see to enhance the space we've been given as a school. Are you interested in play equipment, sunshades, or other infrastructure improvements?

Feel free to email me with your thoughts and ideas at president@chpspandc.org.au

If you have questions about the P&C, the voluntary contribution or would like to become a member, please reach out to me at the email below.

Regards,

Erica Miller CHPS P&C President

president@chpspandc.org.au

<http://www.chpspandc.org.au>

Canteen

Please ensure your child has sufficient food to eat each day, either by packing from home or by ordering food from the canteen through the Flexischools app. Having enough food helps them stay focused, energised and ready to learn throughout the school day.

The Canteens regular menu is available to **order online via Flexischools until 9.00am each day**. If you miss the 9.00am cut-off or your child forgets their food at home, you can still place an order using our **Late Lunch Service** on Flexischools, **available until 12.00pm**.

The Canteen also offers a selected range of tasty foods available to buy over the counter each day at recess and lunch time. Please try not to send your child with notes larger than \$10.00.

ROSTER

Monday June 23	Clair, Reyhaneh
Tuesday June 24	Beenish, Chris
Wednesday Jun 25	Jin, Judy
Thursday June 26	Doreen, Hanna
Friday June 27	Rucha, Urmila, Veena

VOLUNTEERS REQUIRED

The canteen is still in need of regular volunteers to fill our monthly roster.

CAN YOU SPARE JUST 1 DAY PER MONTH???

(that works out to just 6 times between here and the end of the year)



of our last-minute contact list.

If you would like to be added to our roster, even for just one day a month, or have any other questions at all about the canteen and the services we offer please reach out to us using one of the methods below.

- [0428 401 821](tel:0428401821) Text message
- canteen@chpspandc.org.au
- [Online Canteen Volunteer Form](#)



We need your help to support our wonderful team of current volunteers. To help keep our prices low, remember Many Hands Make Light Work!!!

We pay in coffee (or tea), laughs and a free lunch for yourself, also anything you purchase for your children on the day you volunteer you will receive a 50% discount off the total cost.

Volunteering in the canteen is a fantastic way to get to know other parents and school staff as well as ensure the P&C can keep prices affordable for everyday ordering. A regular commitment of as little as one day a month is all it takes, or you can opt to be a part



Tanya
Canteen Manager
Castle Hill Public School

Uniform Shop

Uniform Update

A reminder that all students are required to wear their full Winter uniform for Terms 2 & 3.



CASTLE HILL
PUBLIC SCHOOL
P&C ASSOCIATION

Online purchase is encouraged through the Flexischools app and delivery will be made to your child's class.

If you need to purchase uniforms and accessories in person, the uniform shop is open **Monday and Thursday mornings from 8.30-10.30am during the school Term**. Appointments are encouraged.

To make an appointment to visit the uniform shop, please visit

<https://outlook.office365.com/book/UniformShop1@chpspandc.org.au/>

Exchange is always available if you've ordered the wrong size, provided the item hasn't been worn, tags are attached, in original packaging and accompanied by the Flexischools receipt.

Uniform donations

Uniform donations in good condition are gratefully welcome. They can be dropped into the uniform shop on Monday or Thursday mornings or any time during the day to the front office.

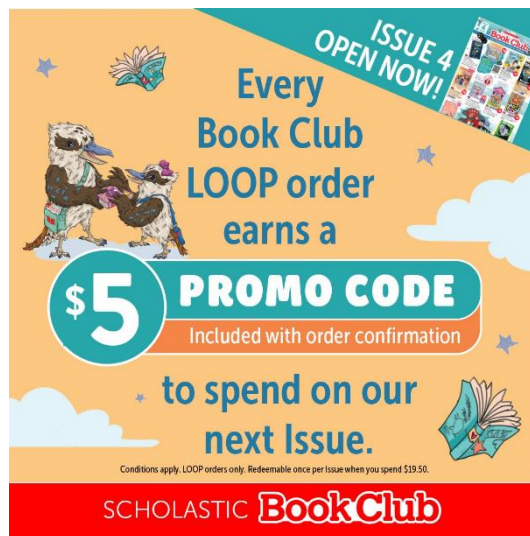
If you have any uniform questions, please contact our Uniform shop manager, Amanda, at uniformshop@chpspandc.org.au

Amanda Turner
Uniform Shop Manager
Castle Hill Public School P&C Association
www.chpspandc.org.au

WINTER SCHOOL UNIFORMS



Book Club



Scholastic Book Club – Issue 4 Out Now!

Issue 4 Book Club catalogues have been distributed to children. Please place your order online only by visiting www.scholastic.com.au/LOOP. Orders will close at the end of day Thursday 19 June and books will be distributed a few weeks later.

Preview Issue 4 here: <https://scholastic.com.au/book-club/book-club-parents/issue-preview/>

For every Book Club order placed, Scholastic gives back 15% of the order spend to the school, which is used to buy essential books and learning resources for the school library.

Sarah Newlove
Book Club Volunteer
sarah.p.newlove@gmail.com

CASTLE HILL PUBLIC SCHOOL - ATHLETICS CARNIVAL 2025

GOODEN RESERVE, BAULKHAM HILLS



PROGRAM OF EVENTS

Please note when the boys are running the girls will be jumping and vice versa.

Prior to the start of the carnival

Boys and Girls

8am 1500m

9am 800m

***PLEASE NOTE: Students competing in the 1500m are required to make their own way to the ground*

Boys 100m Individually Timed Races

13 Yrs (born 2012)

12 Yrs (born 2013)

11 Yrs (born 2014)

10 Yrs (born 2015)

9 Yrs (born 2016)

8 Yrs (born 2017)

Girls Jumping Events

Junior Girls Long Jump

11 Years Girls Long Jump

Senior Girls Long Jump

Junior Girls High Jump

11 Years Girls High Jump

Senior Girls High Jump

Girls 100m Individually Timed Races

13 Yrs (born 2012)

12 Yrs (born 2013)

11 Yrs (born 2014)

10 Yrs (born 2015)

9 Yrs (born 2016)

8 Yrs (born 2017)

Boys Jumping Events

Junior Boys Long Jump

11 Years Boys Long Jump

Senior Boys Long Jump

Junior Boys High Jump

11 Years Boys High Jump

Senior Boys High Jump

200m Individually Timed Races

Junior Boys & Girls

11 Years Boys & Girls

Senior Boys & Girls

Clean Up

Buses

ORGANISATION

All races will be individually timed. These times will be used to select the 3 fastest competitors who will receive ribbons. The top 2 will proceed to zone if they meet the qualifying times.

Age Groups:

Junior

8 years Born 2017

9 years Born 2016

10 years Born 2015

11 Years

Born 2014

Senior

12 Years born 2013

13 Years born 2012

VOLUNTEERS NEEDED!

CHPS LIBRARY



Our library is looking for helpers to contact books for the school. All the contact is provided and no prior experience is required. We are flexible with timing/days if you would like to contact on school premises, or alternatively we can send home the supplies for you to do in the comfort of your home.

Please contact Mrs Lee in the library for more information. We look forward to hearing from you.

CONTACT US NOW

stephanie.lee45@det.nsw.edu.au



Castle Hill Public School

Term 2 - 2025

Month	Week	Monday	Tuesday	Wednesday	Thursday	Friday	Sat/	Sun
		28	29	30	1	2	3	4
Apr May	1	Staff development day	Staff development day	Students return Term 2			ELECTION	
		5	6	7	8	9	10	11
May	2	Stage 3 assembly				Muffins with Mum breakfast		
		12	13	14	15	16	17	18
May	3	Stage 2 assembly	Stage 1 - Year 2 excursion Field of Mars		Stage 1 - Year 1 excursion Field of Mars			
		Year 6 Camp						
		19	20	21	22	23	24	25
May	4	Kindy, Yr 1, Yr 2 assembly						
		Year 5 Camp						
		26	27	28	29	30	31	1
May Jun	5	Stage 3 assembly	Year 6 Castle Hill High School musical					
		2	3	4	5	6	7	8
Jun	6	Stage 2 assembly						
		9	10	11	12	13	14	15
Jun	7	King's Birthday						
		16	17	18	19	20	21	22
Jun	8	Kindy, Yr 1, Yr 2 assembly						
		23	24	25	26	27	28	29
Jun	9	Stage 3 assembly	Years 3-6 Athletics Carnival			School reports sent home via School Bytes		
		30	1	2	3	4	5	6
Jul	10		Platinum Assembly Years 3 and 6	Kindergarten Calmsley Hill City Farm	Platinum Assembly Years 4 and 5	Last day of Term 2		
		Parent / Teacher interviews						